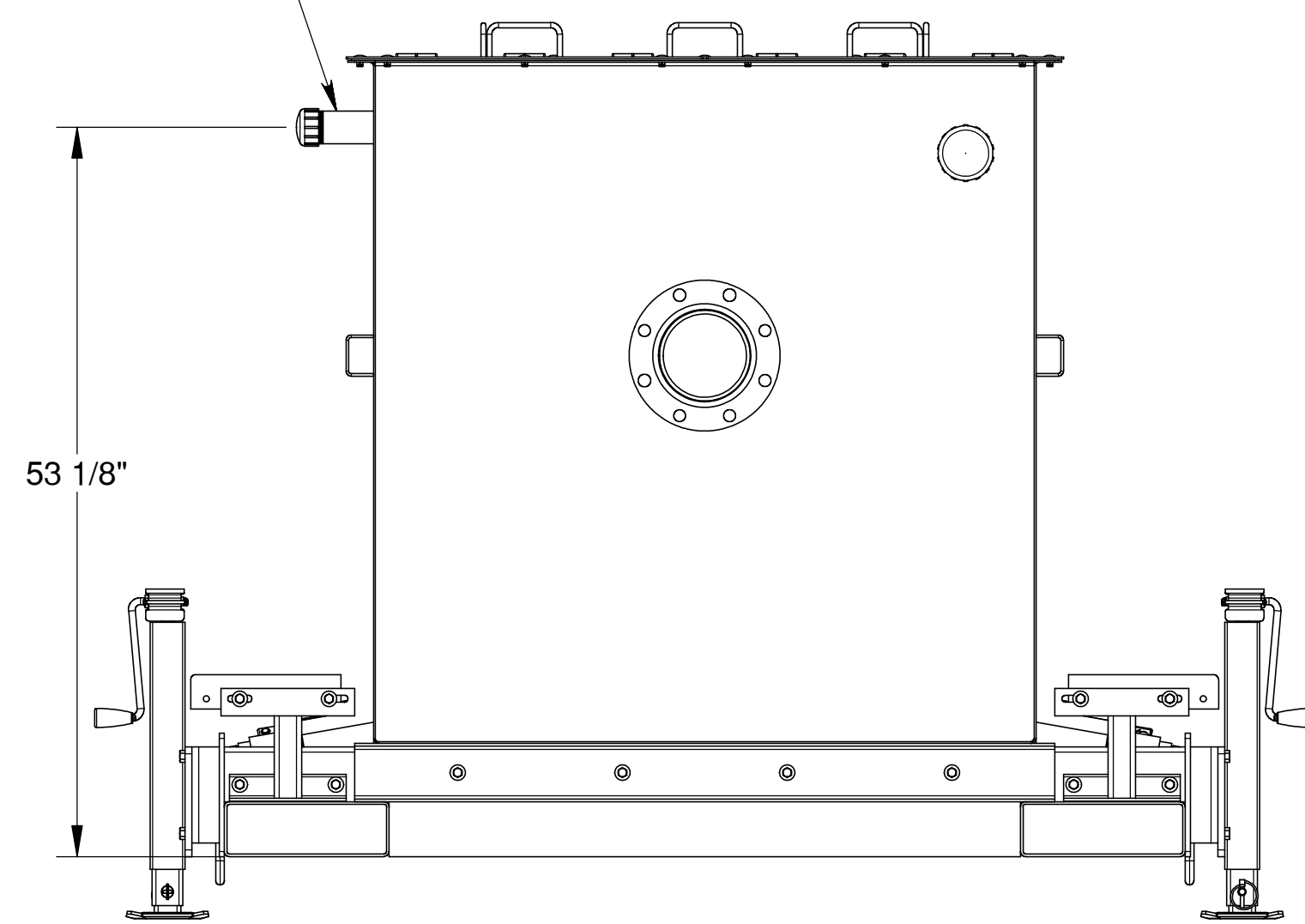


2" THREADED PIPE CONNECTION
FOR COLLECTION OF SKIMMED OIL



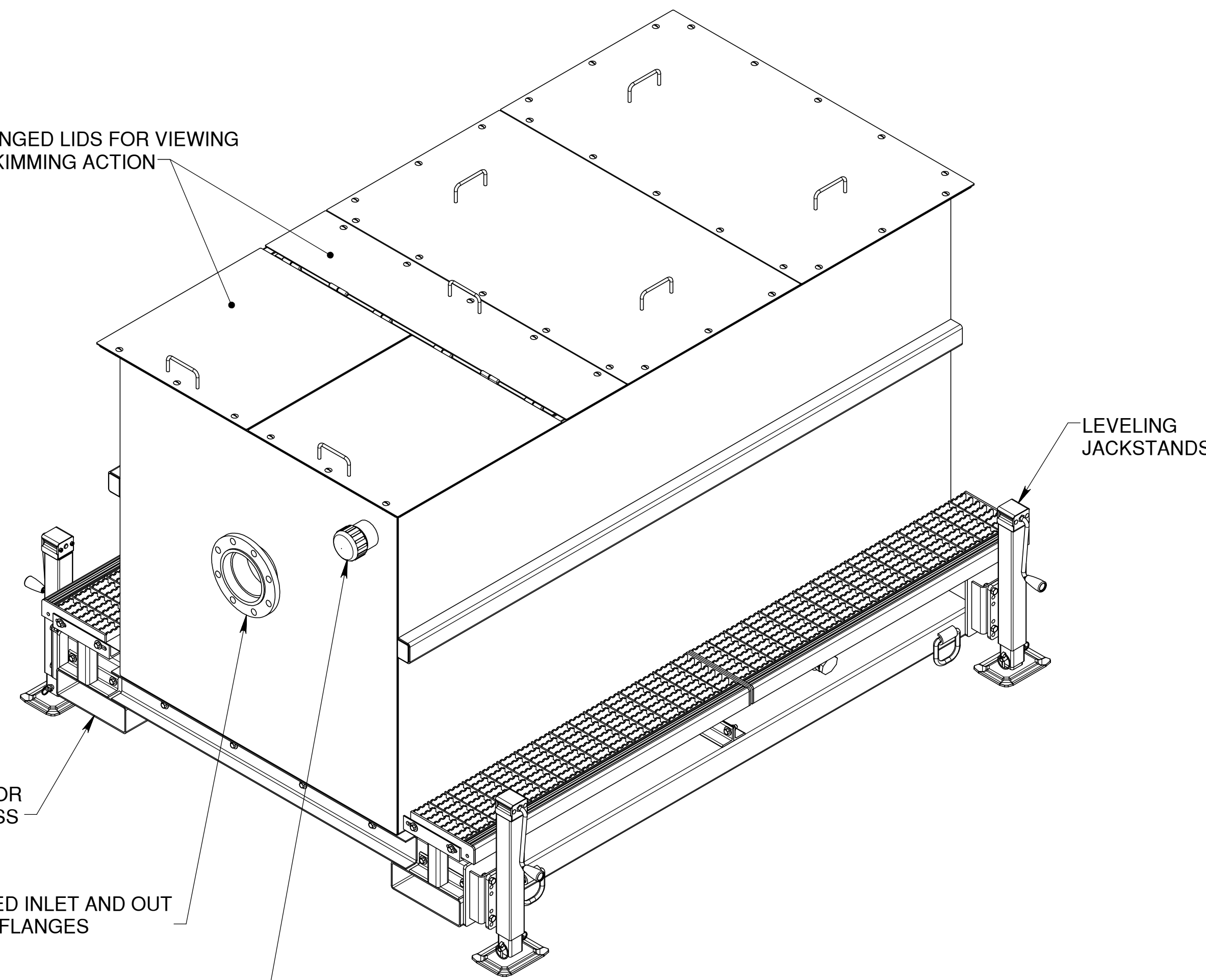
HINGED LIDS FOR VIEWING
SKIMMING ACTION

4"x12" TUBING FOR
FORKLIFT ASSES

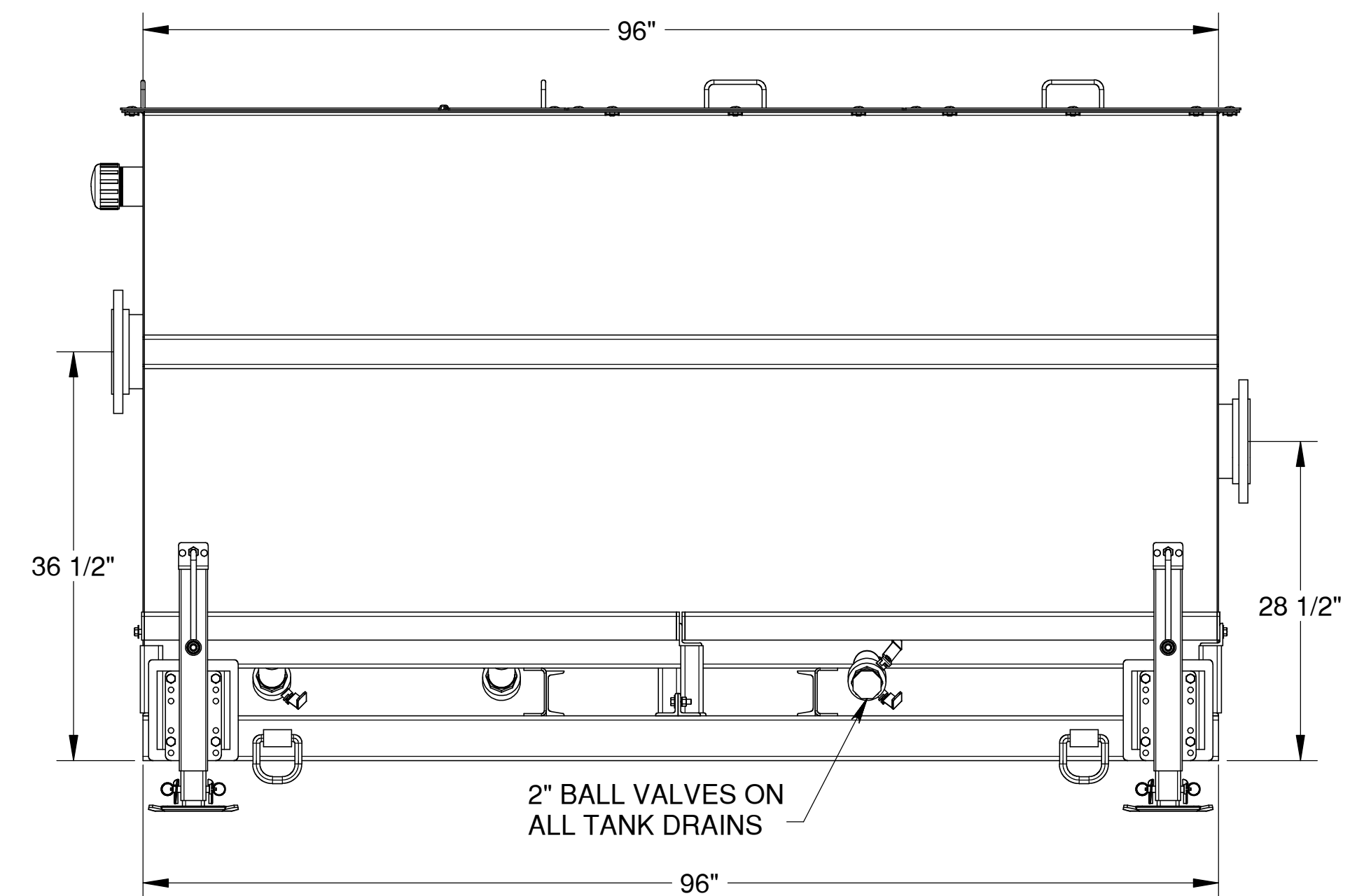
FLANGED INLET AND OUT
6" 150# FLANGES

3" OVERFLOW DRAIN

LEVELING
JACKSTANDS



ISOMETRIC VIEW
NOT TO SCALE



2" BALL VALVES ON
ALL TANK DRAINS

1	COMPLETE UNIT REVISED AS LISTED ON DWGS REFERENCED IN BILL OF MATERIALS	101315-1	KM	9/11/01
REV. NO.	DESCRIPTION	PREV. DWG	BY	DATE

UNLESS OTHERWISE SPECIFIED
INTERPRET PER ASME Y14.24
AND Y14.34A, Y14.35M
ALL DIMENSIONS ARE IN INCHES
ALL DIMENSIONS BEFORE PLATING
MACHINED FINISH UNLESS SPECIFIED
SHEET SCALE IS AS LISTED IN TITLE
BLOCK UNLESS SPECIFIED
OTHERWISE
FRACTIONAL: 1/16
DECIMALS: .XX = ±.010
.XXX = ±.030
.X = ±.100
ANGLES: ±0° .30'

OWS 200
SALES / REFERENCE DRAWING

Rain For Rent
Engineering
3404 State Road PO Box 2248 Bakersfield CA 93303

ALL INFORMATION CONTAINED IN OR
DISCLOSED BY THIS DOCUMENT IS
CONSIDERED CONFIDENTIAL AND
PROPRIETARY BY RAIN FOR RENT
ALL DISCLOSURES OF DESIGN IN-
FORMATION AND REPRODUCTION OF
THIS DOCUMENT AND ALL SALES
RIGHTS ARE EXCLUSIVELY RESER-
VED BY AND TO RAIN FOR RENT
AND COMMUNICATION OF THIS IN-
FORMATION TO OTHERS IS PRO-
HIBITED WITHOUT THE PRIOR WRI-
TEN CONSENT OF RAIN FOR RENT.

DATE: 6/28/2001 SCALE: 1:12
DESIGNED BY:

CHECKED BY: I.DIAZ
DRAWN BY: K.MUSICK

JOB NUMBER: 1010619
DRAWING NUMBER: 101315~1

SHEET 1 OF 1 SHT. SIZE: REV. NO. D 3